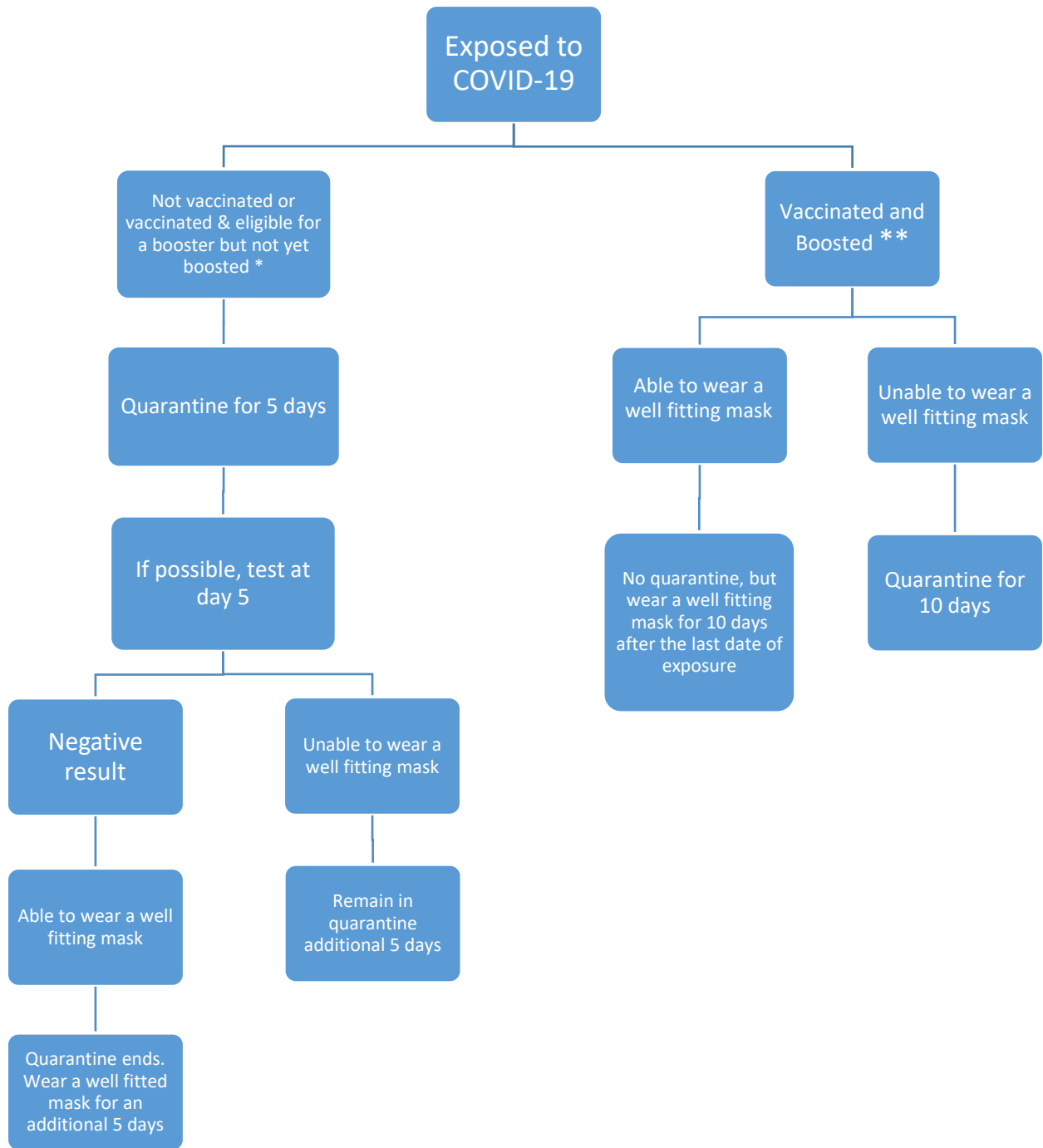


\*Seek immediate healthcare if you are experiencing one or more of the following symptoms: difficulty breathing, persistent pain or pressure in the chest, new confusion or inability to arouse, or bluish lips or face.

Children under age 2 who aren't able to wear a mask will isolate for 10 days

1/18/2022 Contact: Quarantine Flowchart



If symptoms appear at any time, quarantine and seek testing.

\*\*Eligible for a booster 5 months after the 2<sup>nd</sup> mRNA dose or more than 2 months after J&J vaccine. Booster must be at least 2 weeks before the first date of exposure.